

PLAYER EVALUATIONS

JULY 5 & 6 - POSTED

STARS ON THE RISE

Roses Rising Stars Nationals
July 5 & 6
Player Evaluations
Louisville, Kentucky

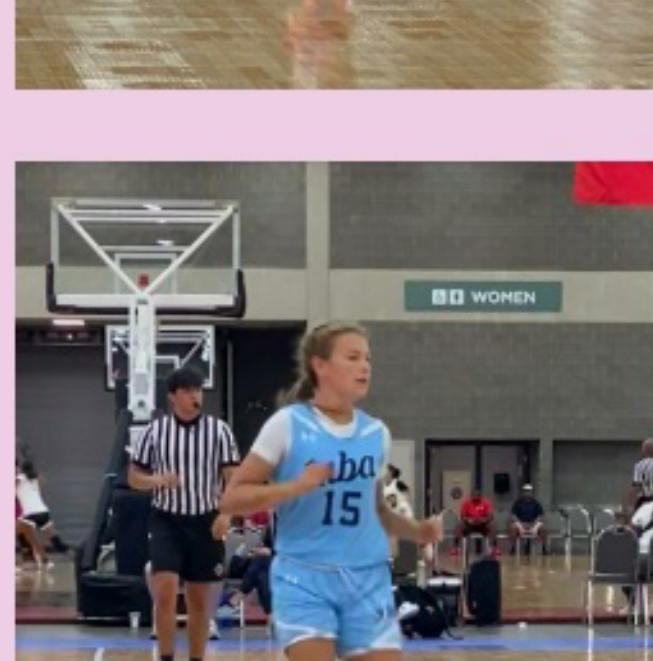
KBE Academy 2030 #23 Maci White

Solid skill set, led by her smooth consistent jumper. She attacks and finds herself at the foul line, a lot. She's a kid that isn't afraid to mix it up on the boards. She shows a lot of composure against ball pressure.



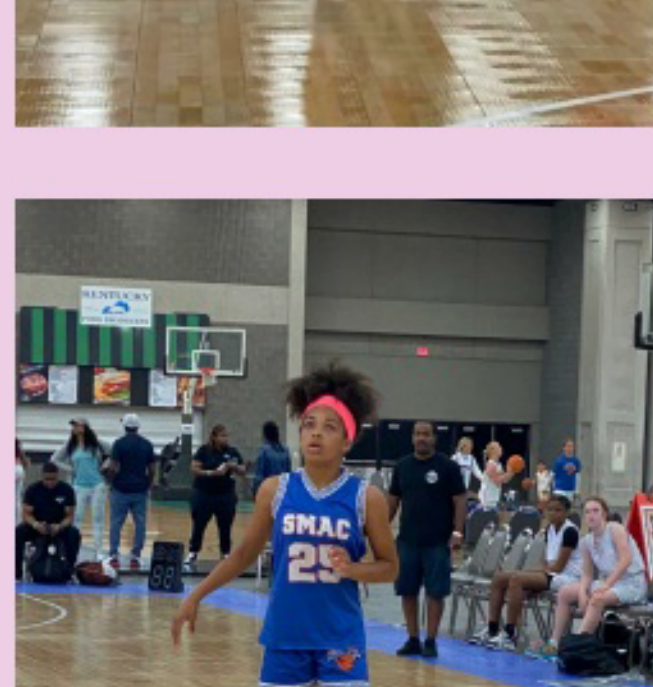
TNBA Cleveland East 2029 #32 Annalin Sullivan

Really nice length and dribbles well with her left. She's really athletic with the ball and has the ability to make shots not only as a spot up, but on the move as well.



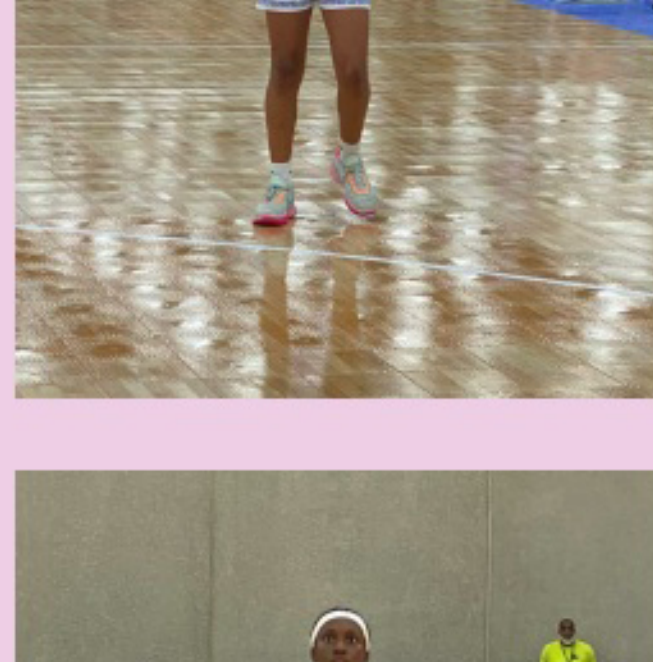
TNBA Cleveland East #15 Julianna Ott

She's a natural scorer that scored from all over the court. She showed off a nice smooth jump shot and some nice runners in the lane. She has a nice IQ which helps her be valuable even without the ball.



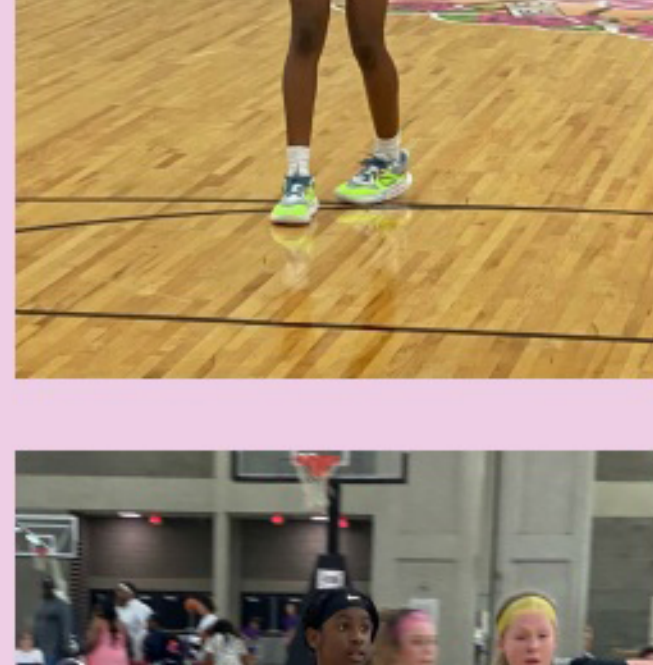
SMAC Elite 2029 #25 Avery Childress

This kid has a great change of speed and direction. She operates at a high level. She plays with bounce and a high motor and power-making her very hard to guard and hard to stop from getting to the rim.



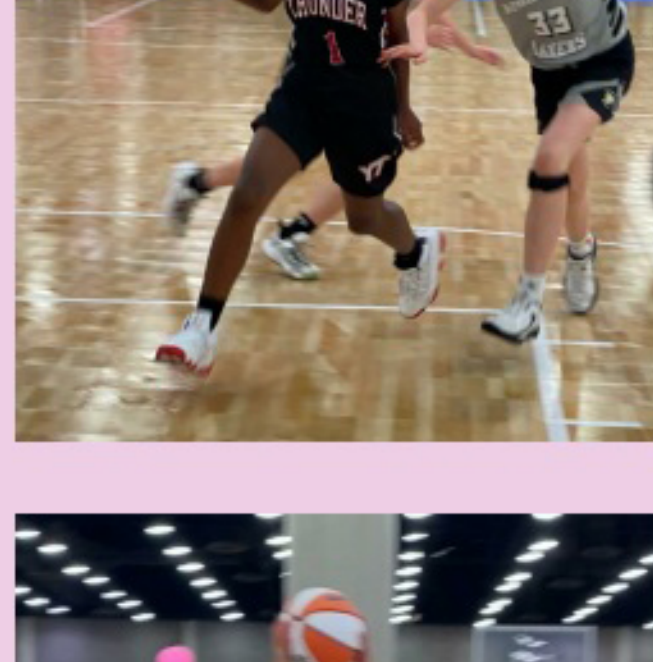
Team Thrill GBB Jeter #0 Mackenzie Davis

She is unbelievable off the dribble, using both hands well. Indelible advanced in PNR situations, making every right decision whether it's finding the slip or rejecting the screen for a step back. Has a wide variety of finishes at the rim, and does a great job finishing around bigs.



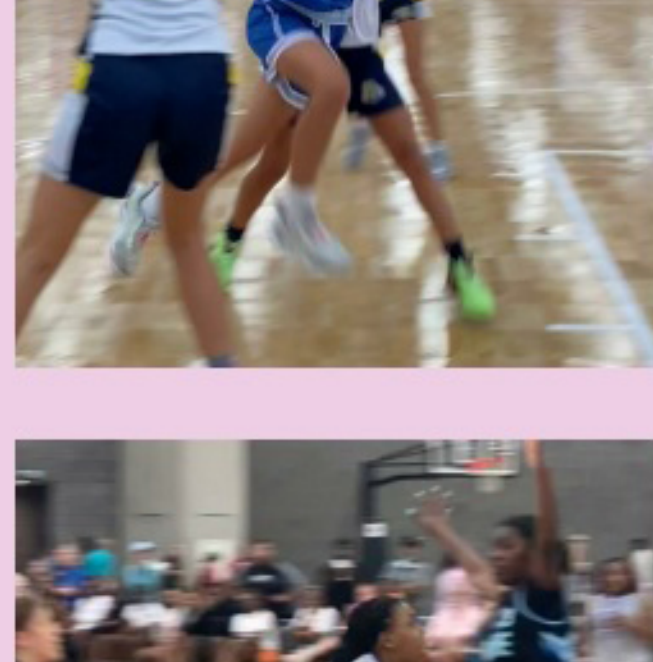
York Thunder Weaver 2029 #1 Denyla Handy

Super athletic and quick. Gives opponents nightmares with her defensive instincts on the perimeter. Turns turnovers into points very quickly, on a regular basis. Uses both hands to finish in transition smoothly.



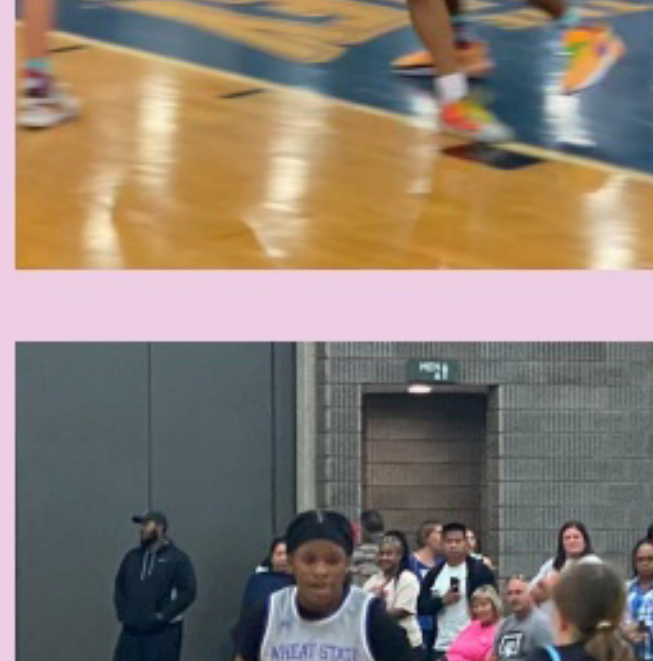
SMAC Elite 2030 #20 Mae Simon

Long athlete who can play all 5 positions on defense. Has a high IQ, which gives her above average diversity on offense. She has a strong move to the basket, that's very quick, and she isn't shy with making the right pass either.



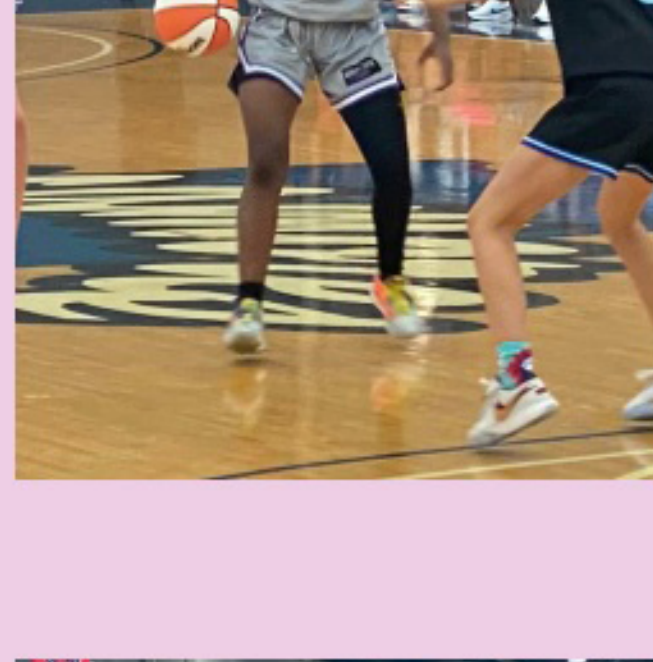
Wheat State Elite Garland 2028 #1 Queen Chalmers

She is electric in transition, barely breaking top speed, even when she has to change direction. She's not only a one man press breaker, she intends on scoring on the other end, or getting her teammates a layup. Even with her top of the line speed, she plays with good pace and poise.



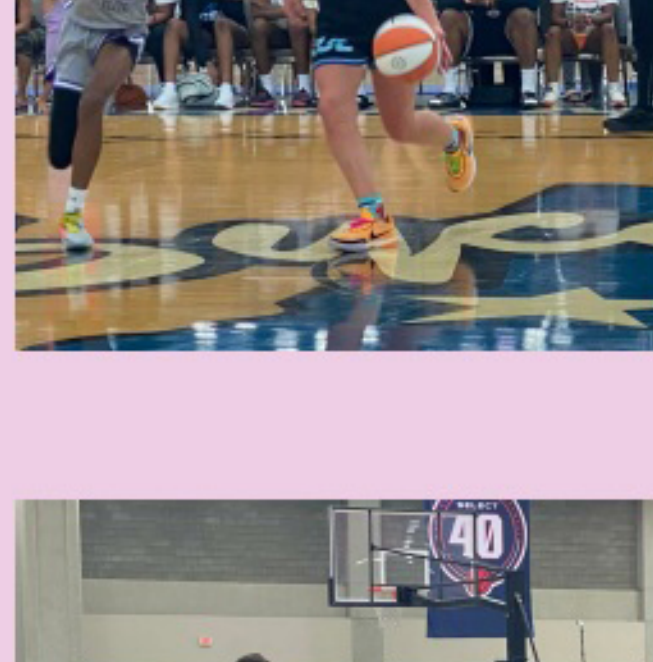
Wheat State Elite Garland 2028 #5 Kamaria Marey

Bigger strong guard. She can run the point or play off the ball. She plays with a serious chip on her shoulder and has bad intentions while heading to the rim. Welcomes contact and physicality.



True Texas Hoops 2028 #13 Berkley Smith

True scorer that can put the ball in the rim at all levels, including the foul line. Her smooth jumper has good range and the release is quick. She's very comfortable putting the ball on the floor and uses her strength and solid frame to get to the rim and the line.



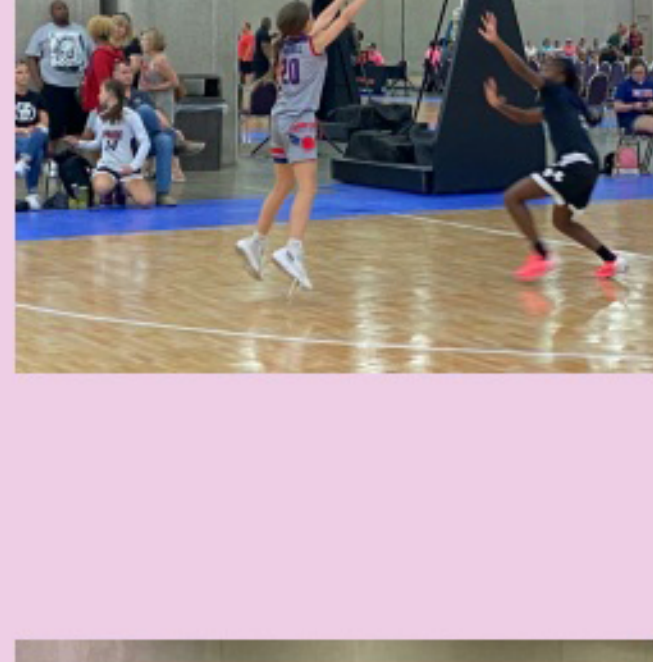
AL Southern Starz Hyde 2029 #1 Kristen Winston

Very long and smooth. She makes a lot of things look easy. Her length creates a lot of deflections and second chances for her team. She gets out in transition very well, with or without the ball. Has some really nice touch in the lane.



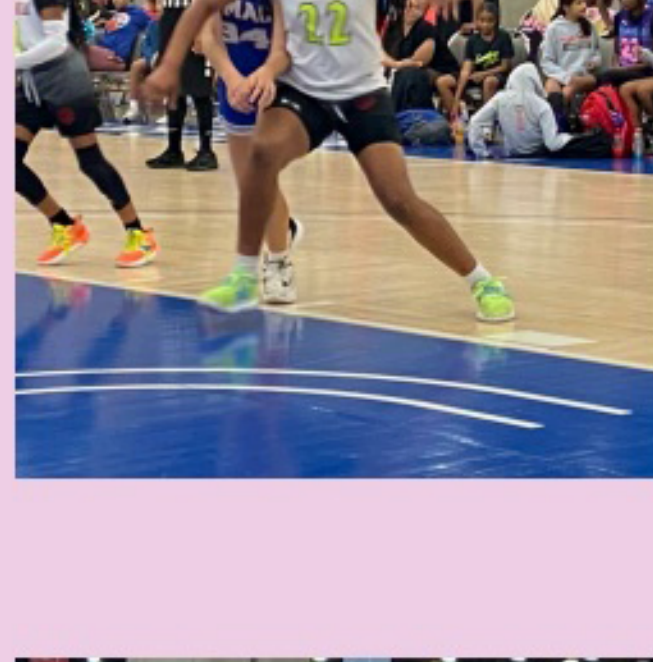
Indiana Ambition 2030 #20 Vivian Lannan

Very smooth lefty. Has a very nice shot, and despite being small, finishes nicely at the rim. She's much tougher than she looks and isn't shy about contact. She also shows a lot of composure as a ball handler for a kid that's younger playing a grade higher.



Team Thrill GBB Jeter #22 Charlee Brown

Very strong and intense in the paint. She is relentless on the glass on both ends of the floor. She knows exactly what to do with every offensive rebound and she doesn't waste much time scoring it. She runs the floor well and can also catch in finish on the run.



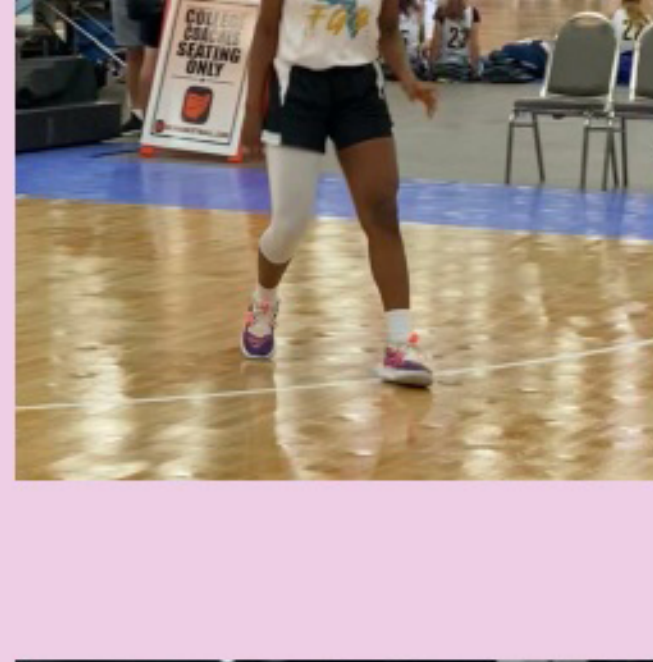
Tennessee Team Pride #5 Riley Clayton

Really fundamental, shoots the ball well, and is a nice passer. Uses her lack of size well with pivots, excellent jump creativity, and good ball fakes. Showed some creativity with scoring moves off the dribble.



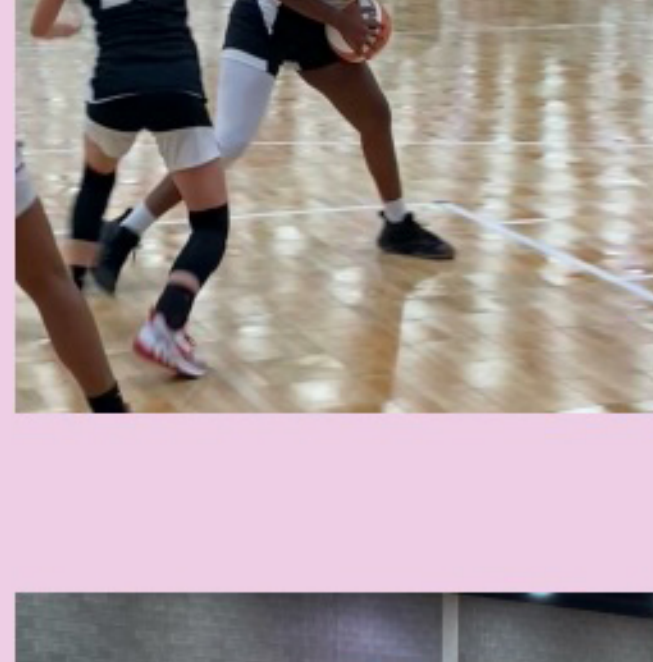
FGB GUAA 2029 #5 A'Niyah Liptrot

Very strong for her age and really good at getting post position. She is an effective scorer on the blocks as well, as she knows exactly what to do with the ball, and doesn't waste much time. Strength and quickness combination is very good.



FGB GUAA 2029 #8 Alexis Hill

Really good size and build. Runs so well for her size. Very strong and physical around the basket. She competes for every single rebound, on both ends. She also has really nice hands, she catches almost any entry pass.



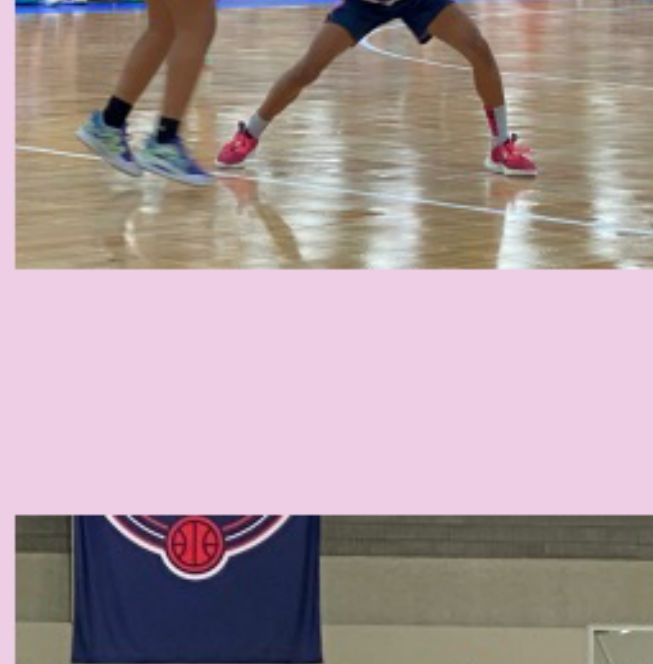
FGB GUAA 2029 #11 Amari Davis

Really skilled in small spaces, especially around the rim. She showed a nice variety of spin moves to score, going both directions. Really nice defender that's able to defend on the perimeter and contest shots in the paint.



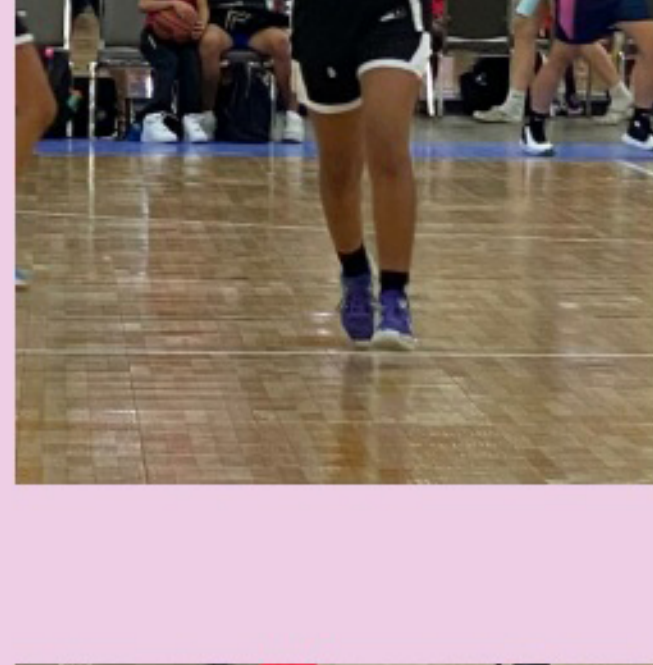
Become One UA Futures 2028 #0 Shekinah Bonney

Really scrappy guard. She's small but has an intimidating demeanor because of her focus and activity. Really skilled ball handler with a quick shot release. Does a really good job of manipulating defenses with the ball to get her teammates open.



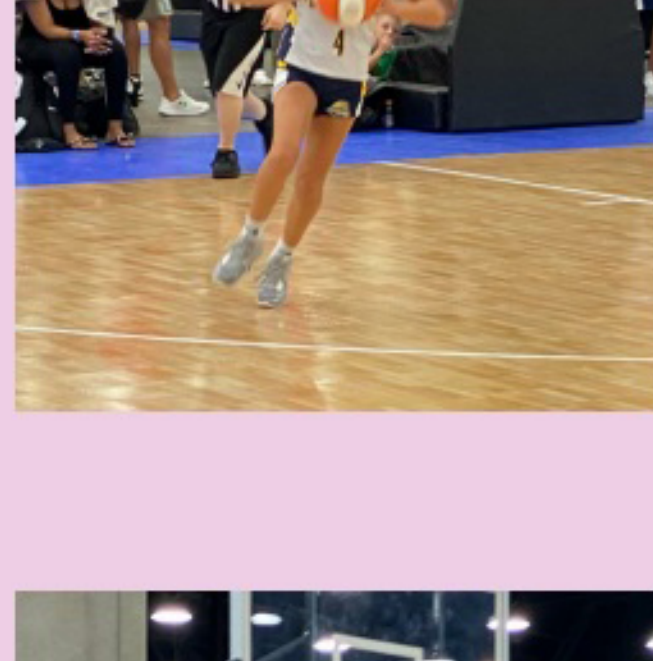
Lady BBE 2028 Lady BBE #23 Akayla Mason

Tenacious defender, who's energy turns into points quick. Really good in transition with a nose for the rim. She strong to the basket in half court as well. Shows some really nice catch and shoot ability.



TN Flight Trotters Williams 2030 #4 Reese Underwood

Really fundamental guard. Uses change of speed very well, and showed a great ability to get midrange pull ups and runners. She sees what the opponent is doing and is a great communicator on her team.



Kentucky Premier 2030 #1 Jylin Edmondson

Really long and athletic. She can get to the basket almost at will. She didn't force drives and showed she could hit mid range jumpers, to three pointers. Defends well, on ball or at the top of a trap, zone or press.



[Visit our Website](#)